

# Light Measurement Report

Print date: 24-2-2025

Measurement date and time: 24-2-2025 10:58:01 – Measurement no. VFR-250224-0139-MS

Measurement tracking No. and Link: [VT250224-007629](#)

Operator:



## Laboratory and Equipment

Laboratory Owner and Location  
Goniospectrometer System and Type  
Sensor Name, Calibr. Date and Serial No.  
Spectrometer Manufacturer and Model

Viso Systems, Copenhagen V, Denmark  
LabSpion – Type C, horizontal  
LabSensor Model2 – 11-1-2024 – 3130191315  
Ibsen Photonics, Denmark – Freedom VIS (Custom Viso)

## Measurement Conditions

Number of C-planes and Resolution  
 $\gamma$  (gamma)-Resolution  
Test Distance  
Input Power, Power and Displ. Factors  
Input RMS Voltage and Current  
Frequency of Input Power  
Warm-up Time and Variation

12 planes – 30°  
5°  
12,10 m  
28,8 W – PF 0,97 – DPF 0,97  
230 V – 0,129 A  
50 Hz  
Lamp stabilized in 15 min 2 sec – 2,0%

## Tested Light Source

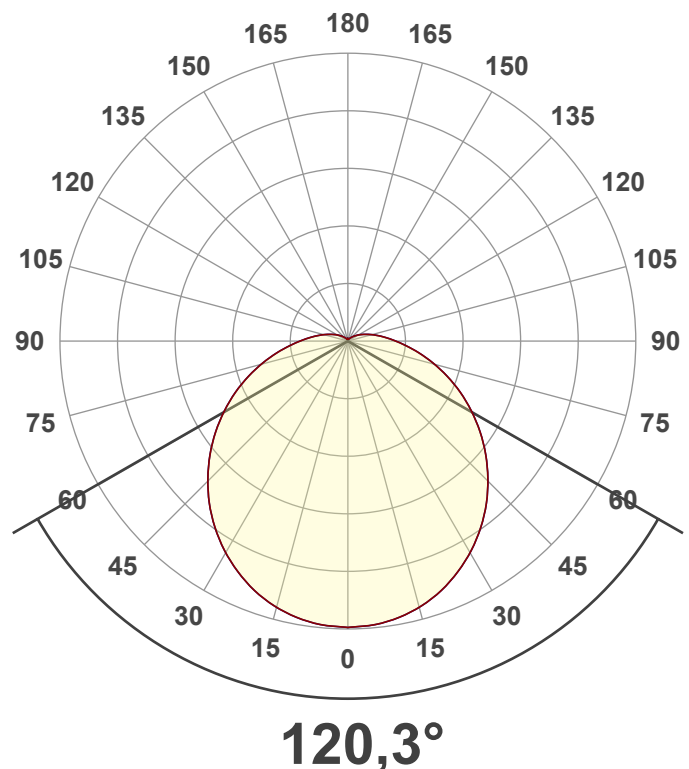
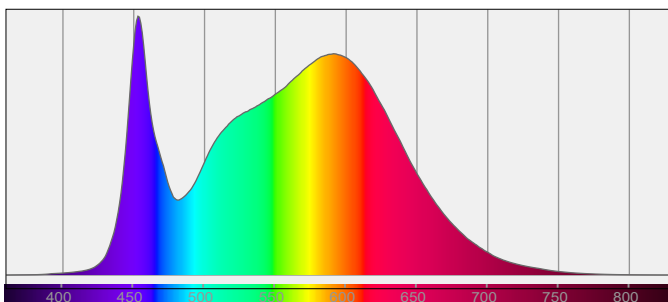
Product Name  
Item No. and Manufacturer  
Product Description (line 1)

T8P150-4000K  
T8P150-4000K – Dutchfulfillment  
PROF LED TL-BUIS | T8 | FLICKER FREE | 150CM | 30W

## Main Light Measurement Results

Output – Total Lumen (Up% / Down%)  
Efficiency  
Peak Intensity and Beam Angle  
Correlated Color Temperature, Target/Measured  
Color Rendering Index  
Color Rendering TM30-18  
Color Shift, CIE duv and MacAdam Steps  
Flicker

4071 lm – 9,68% / 90,32%  
142 lm/W  
1107 cd – 120,3°  
CCT = 4000 K / 4201 K  
CRI 81,9  
 $R_f$  82,9 –  $R_g$  92,5  
Duv 0,0042 – SDCM 5,1  
SVM 2,02 – PstLM 0,1



# Light Measurement Report

Print date: 24-2-2025

Measurement date and time: 24-2-2025 10:58:01 – Measurement no. VFR-250224-0139-MS

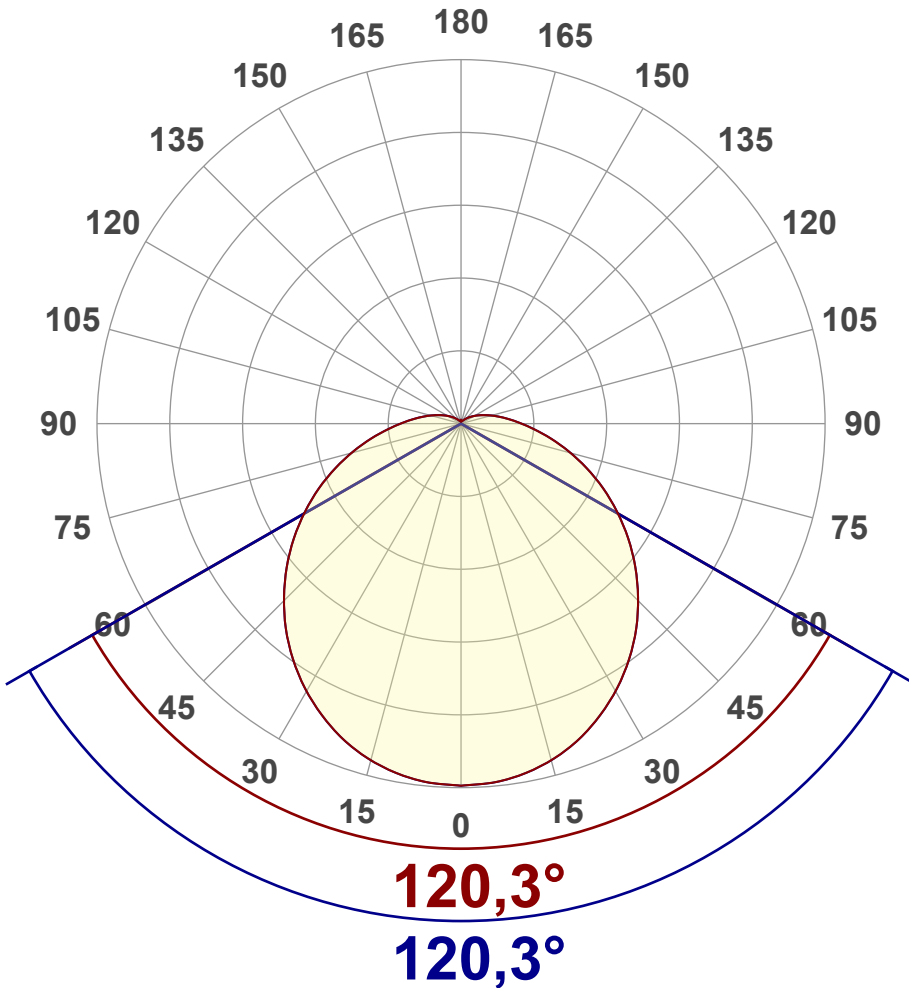
Measurement tracking No. and Link: [VT250224-007629](#)

Operator:



## Luminous Intensity diagram

Unit: 0-100% of peak intensity



## Main Values

Output (total Lumen)	4071 lm
Lumen Up% / Down%	9,68% / 90,32%
Peak Intensity	1107 cd
Beam Angle (50%)	120,3°
Beam Angle (90%)	120,3°
Beam Angle (10%)	120,3°

## Cut-off Angle

Average 2,5%	261°
--------------	------

## Field Angle

Average 10%	203,8°
-------------	--------

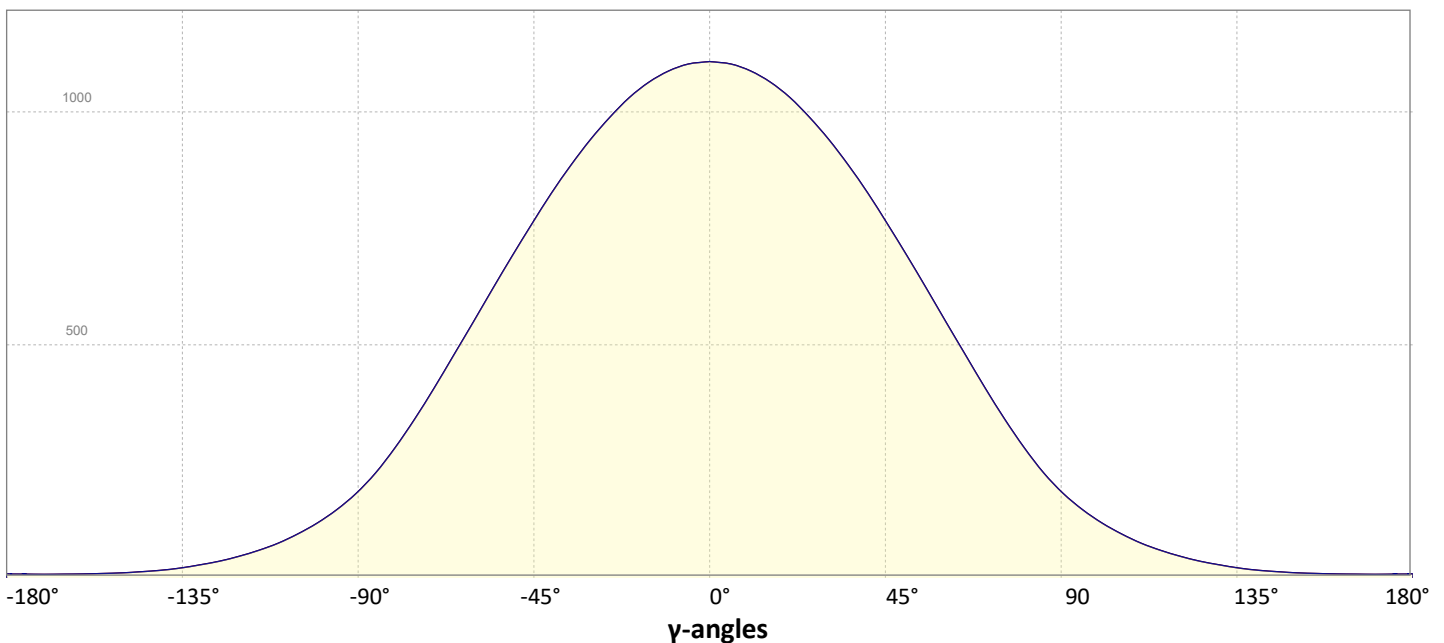
## Intensity Ratio

In 120° cone	63,2%
In 90° cone	42,2%

**C000-C180**

**C090-C270**

## Linear distribution diagram - Intensity (candela) vs $\gamma$ -angle



# Light Measurement Report

Print date: 24-2-2025

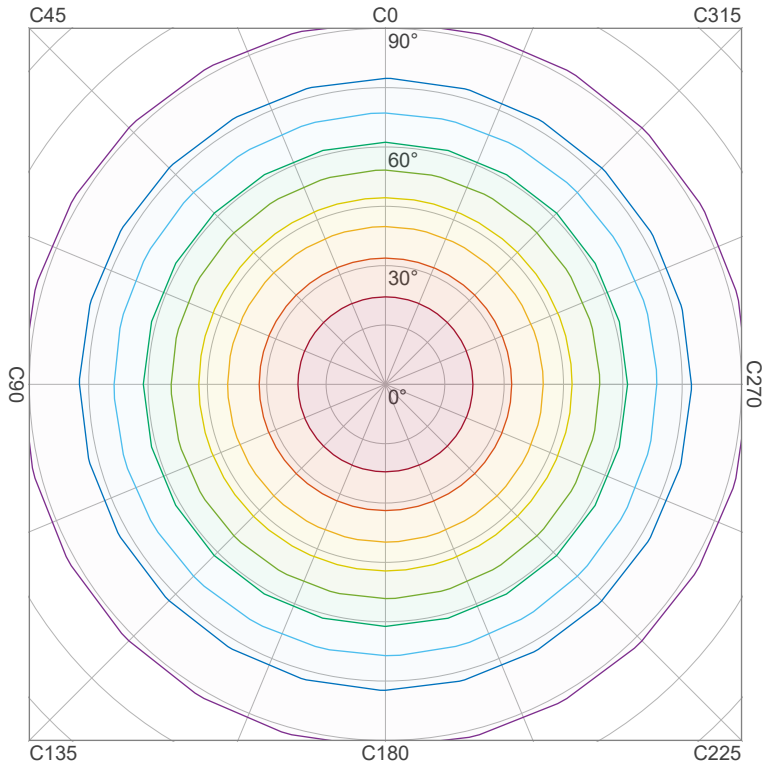
Measurement date and time: 24-2-2025 10:58:01 – Measurement no. VFR-250224-0139-MS

Measurement tracking No. and Link: [VT250224-007629](https://vt250224-007629)

Operator:



## Iso-intensity Diagram (Iso-candela)

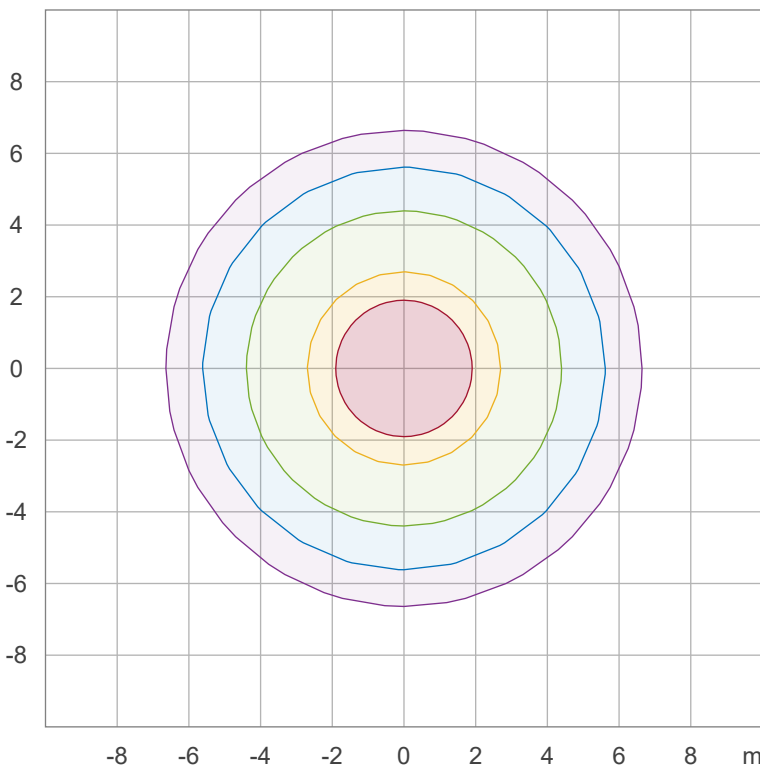


90 %	996,7 cd
80 %	886,0 cd
70 %	775,2 cd
60 %	664,5 cd
50 %	553,7 cd
40 %	443,0 cd
30 %	332,2 cd
20 %	221,5 cd
10 %	110,7 cd

Peak intensity: 1107,5 cd

Number of c-planes: 12

## Iso-illuminance Diagram (Iso-lux)



50,0 %	61,5 lx
30,0 %	36,9 lx
10,0 %	12,3 lx
5,0 %	6,2 lx
3,0 %	3,7 lx

Peak illuminance: 123,1 lx

Mounting height: 3,0 m

Number of c-planes: 12

# Light Measurement Report

Print date: 24-2-2025

Measurement date and time: 24-2-2025 10:58:01 – Measurement no. VFR-250224-0139-MS

Measurement tracking No. and Link: [VT250224-007629](https://www.viso-systems.com/VT250224-007629)

Operator:

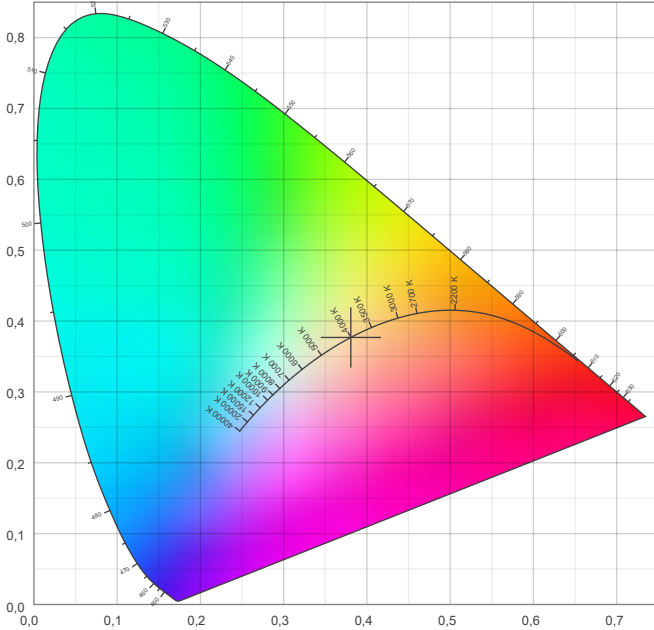


## Color details

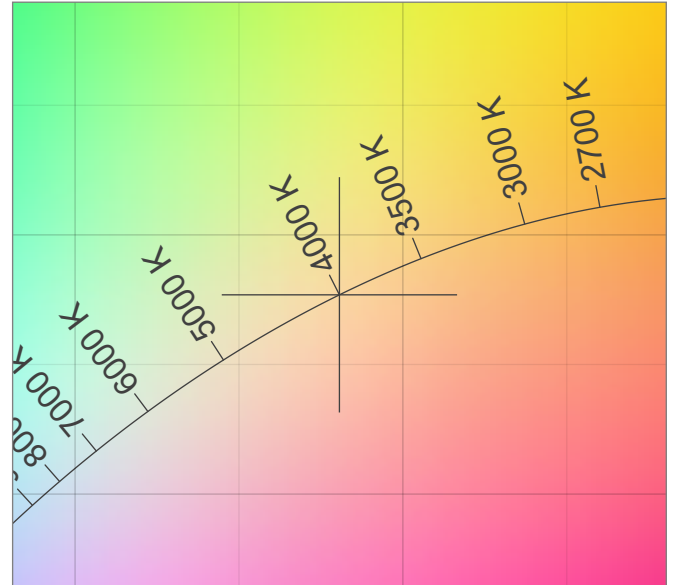
Correlated Color Temperature, Target CCT = 4000 K  
 Correlated Color Temperature, Measured CCT = 4201 K  
 Color Rendering Index CRI 81,9  
 Color Rendering Index, R9 (red component) R9 = -0,9  
 Color Rendering TM30-18 R<sub>f</sub> 82,9 – R<sub>g</sub> 92,5  
 Color Quality Scale CQS = 81,5

MacAdam Steps  
 Color coordinates CIE 1931 (x;y) = (0,381;0,377)  
 Color coordinate CIEs 1960 (u;v) = (0,225;0,334)  
 Color deviation from BBL Duv = 0,0042  
 Color coordinate CIEs 1976 (CIELUV) (u';v') = (0,225;0,502)

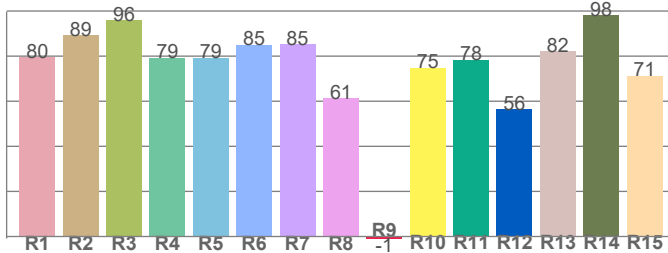
### CIE 1931



### CIE 1931 – zoomed on Planckian locus



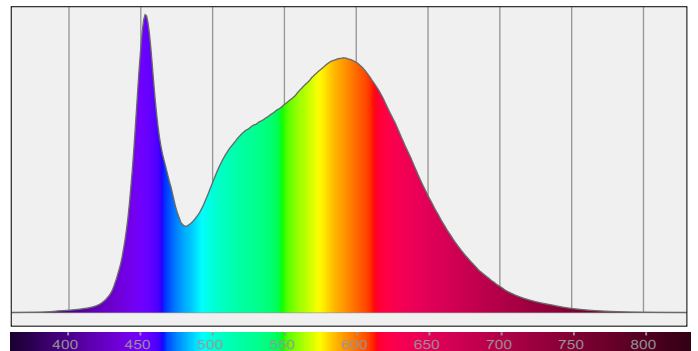
### Color Rendering Index per reference color (CIE 1995)



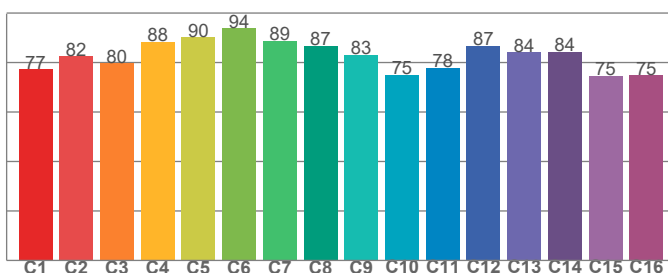
CRI R values, only R1-R8 are used to calculate final CRI value

R1	R2	R3	R4	R5	R6	R7	R8	R9	R10	R11	R12	R13	R14	R15
79,5	89,3	96,0	79,4	79,3	85,1	85,2	61,4	-0,9	74,8	78,4	56,5	82,3	98,1	71,3

### Spectral power distribution (SPD) / W/nm – 0-100%



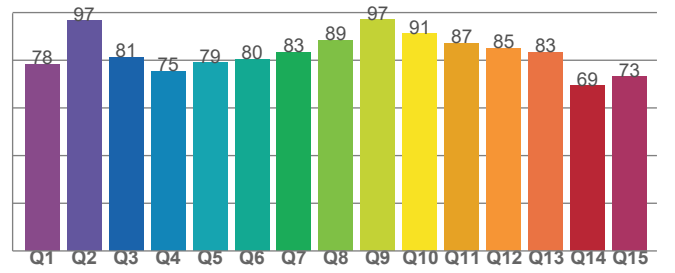
### TM30-18 Rf-values per hue bin



TM30 C values, 16 binned values out of total of 99 C values

C1	C2	C3	C4	C5	C6	C7	C8	C9	C10	C11	C12	C13	C14	C15	C16
77,4	82,4	79,8	88,4	90,3	93,9	88,8	86,8	83,1	75,0	77,9	86,7	84,1	84,3	74,6	74,9

### Color Quality Scale by reference color



CQS Q values

Q1	Q2	Q3	Q4	Q5	Q6	Q7	Q8	Q9	Q10	Q11	Q12	Q13	Q14	Q15
78,4	96,6	81,2	75,3	78,9	80,4	83,3	88,5	97,0	91,1	87,2	84,9	83,3	69,3	73,1

# Light Measurement Report

Print date: 24-2-2025

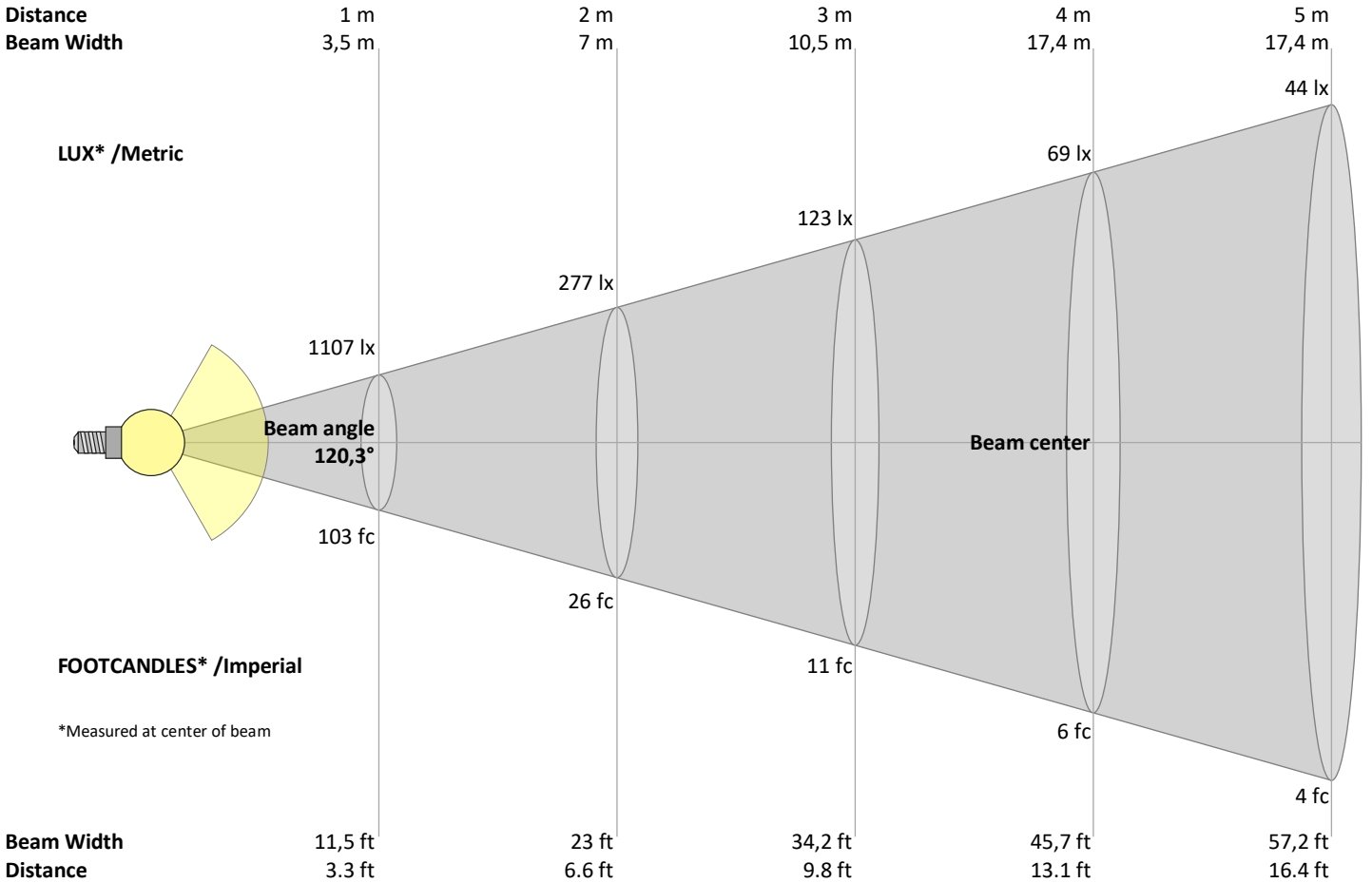
Measurement date and time: 24-2-2025 10:58:01 – Measurement no. VFR-250224-0139-MS

Measurement tracking No. and Link: [VT250224-007629](https://www.viso-systems.com/VT250224-007629)

Operator:



## Beam Details



### Beam intensities from 1 – 20 m

1	2	3	4	5	6	7	8	9	10	11	12	13	14	15	16	17	18	19	20	m
3,3	6,6	9,8	13,1	16,4	19,7	23	26,2	29,5	32,8	36,1	39,4	42,7	45,9	49,2	52,5	55,8	59,1	62,3	65,6	ft
1107	277	123	69	44	31	23	17	14	11	9	8	7	6	5	4	4	3	3	3	lux
102,9	25,7	11,4	6,4	4,1	2,9	2,1	1,6	1,3	1	0,9	0,7	0,6	0,5	0,5	0,4	0,4	0,3	0,3	0,3	fc

### Intensities in 0° c-plane

0°	9°	18°	27°	36°	45°	54°	63°	72°	81°	90°	99°	108°	117°	126°	135°	144°	153°	162°	171°	γ
1107	1092	1048	974	880	766	642	514	388	274	186	126	84	55	35	22	14	10	8	7	cd
100%	99%	95%	88%	79%	69%	58%	46%	35%	25%	17%	11%	8%	5%	3%	2%	1%	1%	1%	1%	of 0°val

### Intensities in 90° c-plane

0°	9°	18°	27°	36°	45°	54°	63°	72°	81°	90°	99°	108°	117°	126°	135°	144°	153°	162°	171°	γ
1107	1092	1048	974	880	766	642	514	388	274	186	126	84	55	35	22	14	10	8	7	cd
100%	99%	95%	88%	79%	69%	58%	46%	35%	25%	17%	11%	8%	5%	3%	2%	1%	1%	1%	1%	of 0°val

### Intensities in 180° c-plane

0°	9°	18°	27°	36°	45°	54°	63°	72°	81°	90°	99°	108°	117°	126°	135°	144°	153°	162°	171°	γ
1107	1092	1048	974	880	766	642	514	388	274	186	126	84	55	35	22	14	10	8	7	cd
100%	99%	95%	88%	79%	69%	58%	46%	35%	25%	17%	11%	8%	5%	3%	2%	1%	1%	1%	1%	of 0°val

### Intensities in 270° c-plane

0°	9°	18°	27°	36°	45°	54°	63°	72°	81°	90°	99°	108°	117°	126°	135°	144°	153°	162°	171°	γ
1107	1092	1048	974	880	766	642	514	388	274	186	126	84	55	35	22	14	10	8	7	cd
100%	99%	95%	88%	79%	69%	58%	46%	35%	25%	17%	11%	8%	5%	3%	2%	1%	1%	1%	1%	of 0°val

# Light Measurement Report

Print date: 24-2-2025

Measurement date and time: 24-2-2025 10:58:01 – Measurement no. VFR-250224-0139-MS

Measurement tracking No. and Link: [VT250224-007629](https://vt250224-007629)

Operator:



## Light Planning – UGR table

Uncorrected, comprehensive UGR table according to 117-1995

Reflectances		70	70	50	50	30	70	70	50	50	30
	ρ Ceiling	70	70	50	50	30	70	70	50	50	30
	ρ Walls	50	30	50	30	30	50	30	50	30	30
	ρ Floor	20	20	20	20	20	20	20	20	20	20
Room size		Viewed Crosswise					Viewed Endwise				
H = mounting height above eye level		(Viewing direction orthogonal to lamp length axis)					(Viewing direction parallel to lamp length axis)				
X	Y										
2H	2H	23,1	24,3	23,5	24,8	25,2	22,2	23,4	22,6	23,8	24,3
	3H	25,0	26,3	25,6	26,7	27,1	23,8	25,0	24,3	25,5	25,9
	4H	26,1	27,3	26,6	27,7	28,2	24,6	25,7	25,1	26,2	26,6
	6H	27,2	28,3	27,7	28,7	29,3	25,3	26,4	25,8	26,8	27,4
	8H	27,8	28,8	28,3	29,3	29,9	25,7	26,7	26,1	27,1	27,7
	12H	28,4	29,4	28,9	29,9	30,5	25,9	27,0	26,4	27,4	28,0
4H	2H	23,6	24,8	24,1	25,2	25,7	22,9	24,1	23,4	24,5	25,0
	3H	25,8	26,9	26,3	27,3	27,9	24,8	25,8	25,3	26,3	26,9
	4H	26,9	28,0	27,5	28,4	29,1	25,6	26,7	26,2	27,1	27,8
	6H	28,2	29,1	28,8	29,6	30,1	26,5	27,4	27,1	27,9	28,4
	8H	28,8	29,6	29,4	30,2	30,7	26,9	27,7	27,5	28,2	28,8
	12H	29,6	30,2	30,2	30,8	31,4	27,3	27,9	27,9	28,5	29,2
8H	4H	27,2	28,0	27,8	28,5	29,1	26,1	26,9	26,7	27,4	28,0
	6H	28,6	29,3	29,3	29,9	30,6	27,2	27,8	27,8	28,4	29,1
	8H	29,4	30,0	30,1	30,6	31,4	27,7	28,3	28,4	28,9	29,7
	12H	30,3	30,8	31,0	31,4	32,2	28,2	28,7	28,9	29,4	30,1
12H	4H	27,2	27,9	27,9	28,5	29,1	26,2	26,8	26,8	27,4	28,1
	6H	28,7	29,3	29,4	29,9	30,7	27,4	27,9	28,0	28,6	29,4
	8H	29,6	30,0	30,3	30,7	31,4	27,9	28,4	28,6	29,1	29,8

### Variations with the observer position for the luminaire spacings, S:

S = 1.0H	0,1 / 0,0	0,1 / -0,1
S = 1.5H	0,1 / -0,1	0,1 / -0,1
S = 2.0H	0,3 / -0,3	0,2 / -0,3

## Coefficients of Utilization

Ceiling reflectance	80			70			50			30			10			0		
Wall reflectance	70	50	30	10	70	50	30	10	50	30	10	50	30	10	50	30	10	0
Floor reflectance	20	20	20	20	20	20	20	20	20	20	20	20	20	20	20	20	20	0
RCR	(RCR: Room Cavity Ratio)																	
	Room Values are expressed as percentage of Lumen delivered to the task surface																	
0	117	117	117	117	113	113	113	113	106	106	106	99	99	99	93	93	93	90
1	104	99	93	89	100	95	91	86	89	85	82	84	80	78	78	76	74	71
2	94	85	77	71	90	82	75	69	77	71	66	72	67	63	68	64	60	57
3	85	74	65	58	82	71	63	57	67	60	54	63	57	52	59	54	50	47
4	78	65	56	49	75	63	54	48	59	52	46	56	49	44	52	47	43	40
5	71	58	48	41	68	56	47	41	53	45	39	50	43	38	47	41	37	34
6	66	52	43	36	63	50	42	35	48	40	34	45	38	33	43	37	32	30
7	61	47	38	32	59	46	37	31	43	36	30	41	34	29	39	33	28	26
8	57	43	34	28	54	42	33	28	39	32	27	37	31	26	36	30	25	23
9	53	39	31	25	51	38	30	25	36	29	24	35	28	24	33	27	23	21
10	50	36	28	23	48	35	28	22	34	27	22	32	26	21	30	25	21	19

# Light Measurement Report

Print date: 24-2-2025

Measurement date and time: 24-2-2025 10:58:01 – Measurement no. VFR-250224-0139-MS

Measurement tracking No. and Link: [VT250224-007629](https://www.viso-systems.com/VT250224-007629)

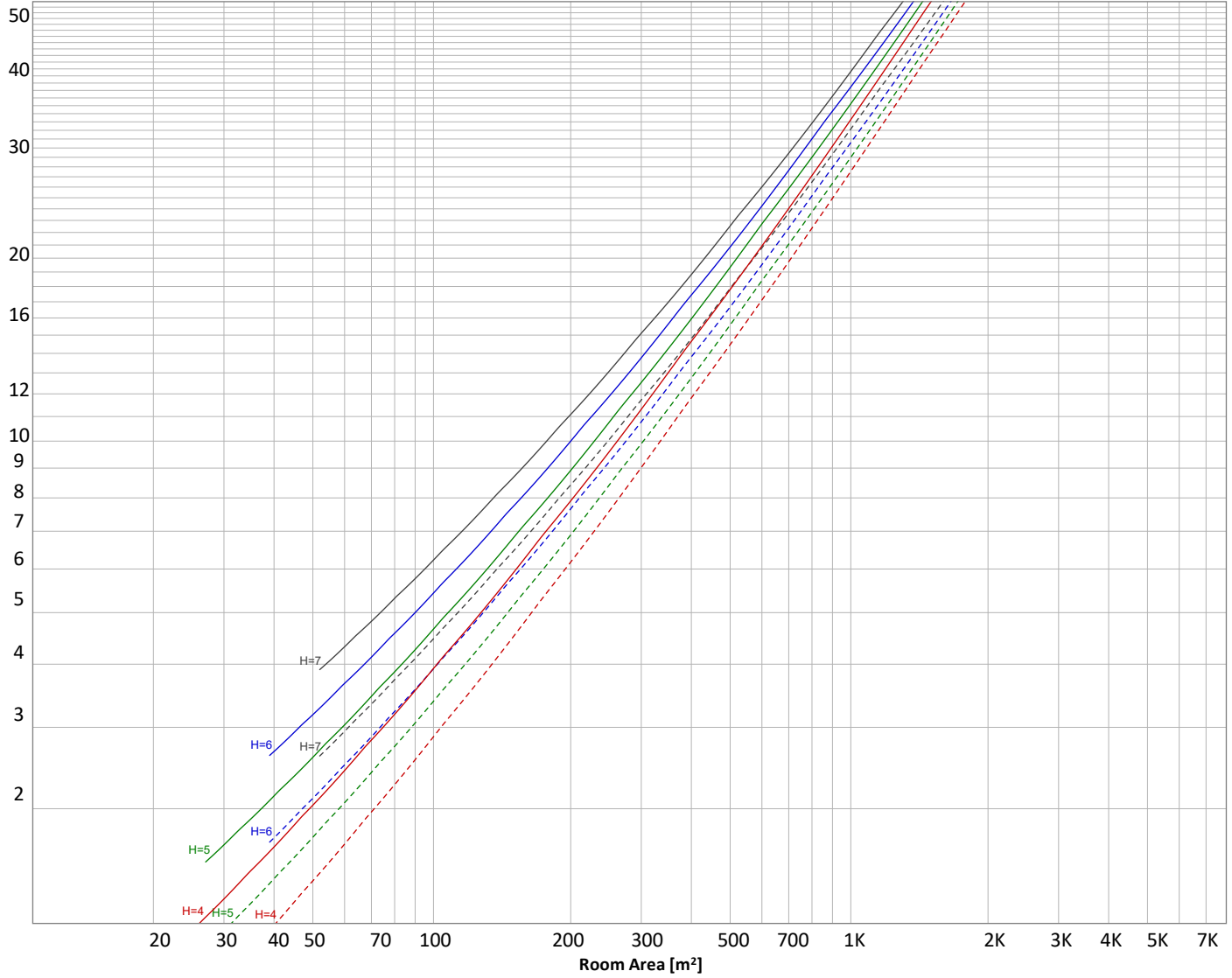
Operator:



## Luminaire budgetary diagram

Uncorrected, comprehensive UGR table according to 117-1995

LAMPS (number of lamps)



### Conditions

H = Room height	Flux = 4071 lm	ρ(%)			
H <sub>down</sub> = Lamp distance from ceiling =	0.00 m	Line type	Ceiling reflectance	Wall reflectance	Floor reflectance
H <sub>work</sub> = Work area height from floor =	0.00 m	-----	70	50	30
E <sub>work</sub> = Average lux on work area =	100 lx	_____	50	30	20

### Zonal Lumen Summary

0°-10°	10°-20°	20°-30°	30°-40°	40°-50°	50°-60°	60°-70°	70°-80°	80°-90°
105 lm	301 lm	458 lm	558 lm	591 lm	562 lm	481 lm	368 lm	254 lm
90°-100°	100°-110°	110°-120°	120°-130°	130°-140°	140°-150°	150°-160°	160°-170°	170°-180°
165 lm	103 lm	60,6 lm	33,5 lm	17,1 lm	8,48 lm	4,36 lm	2,22 lm	0,725 lm

# Light Measurement Report

Print date: 24-2-2025

Measurement date and time: 24-2-2025 10:58:01 – Measurement no. VFR-250224-0139-MS

Measurement tracking No. and Link: [VT250224-007629](#)

Operator:



## Outdoor Light Planning

### Lumen per Zone

Zone (γ)	Lumen	% Total
0-10°	{LUM00-10} lm	#VALUE!
10-20°	{LUM10-20} lm	#VALUE!
20-30°	{LUM20-30} lm	#VALUE!
30-40°	{LUM30-40} lm	#VALUE!
40-50°	{LUM40-50} lm	#VALUE!
50-60°	{LUM50-60} lm	#VALUE!
60-70°	{LUM60-70} lm	#VALUE!
70-80°	{LUM70-80} lm	#VALUE!
80-90°	{LUM80-90} lm	#VALUE!
90-100°	{LUM90-100} lm	#VALUE!
100-110°	{LUM100-110} lm	#VALUE!
110-120°	{LUM110-120} lm	#VALUE!
120-130°	{LUM120-130} lm	#VALUE!
130-140°	{LUM130-140} lm	#VALUE!
140-150°	{LUM140-150} lm	#VALUE!
150-160°	{LUM150-160} lm	#VALUE!
160-170°	{LUM160-170} lm	#VALUE!
170-180°	{LUM170-180} lm	#VALUE!
<b>Total</b>	<b>0 lm</b>	<b>#VALUE!</b>

### Intensity peaks

Max intensity	{PEAK} cd
Intensity, 90°	{INT90} cd
Intensity, 0°	{INT0} cd

### Zonal Lumen summary

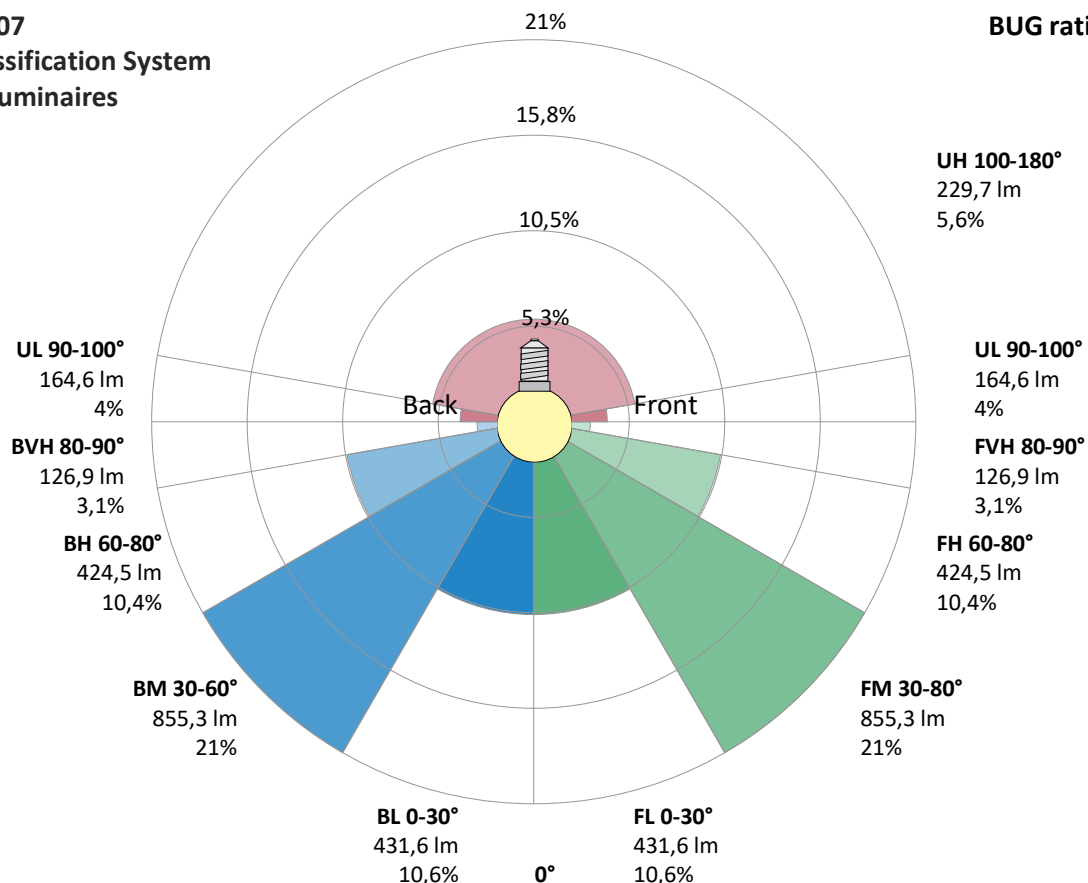
Zone (γ)	Lumen	% Total
0-30°	{LUM00-30} lm	#VALUE!
0-40°	{LUM00-40} lm	#VALUE!
0-60°	{LUM00-60} lm	#VALUE!
60-90°	{LUM60-90} lm	#VALUE!
70-100°	{LUM70-100} lm	#VALUE!
90-120°	{LUM90-120} lm	#VALUE!
0-90°	{LUM00-90} lm	#VALUE!
90-180°	{LUM90-180} lm	#VALUE!
0-180°	{LUM00-180} lm	#VALUE!

### BUG rating

	Lumen	% Total
<b>Forward light</b>		
Low(0-30°)	{BUG0} lm	#VALUE!
Medium(30-60°)	{BUG1} lm	#VALUE!
High(60-80°)	{BUG2} lm	#VALUE!
Very high(80-90°)	{BUG3} lm	#VALUE!
<b>Back light</b>		
Low(0-30°)	{BUG4} lm	#VALUE!
Medium(30-60°)	{BUG5} lm	#VALUE!
High(60-80°)	{BUG6} lm	#VALUE!
Very high(80-90°)	{BUG7} lm	#VALUE!
<b>Uplight</b>		
Low(90-100°)	{BUG8} lm	#VALUE!
High(100-180°)	{BUG9} lm	#VALUE!

## IESNA TM-15-07 Luminaire Classification System For Outdoor Luminaires

**BUG rating B1 U3 G2**





# Light Measurement Report

Print date: 24-2-2025

Measurement date and time: 24-2-2025 10:58:01 – Measurement no. VFR-250224-0139-MS

Measurement tracking No. and Link: [VT250224-007629](#)

Operator:

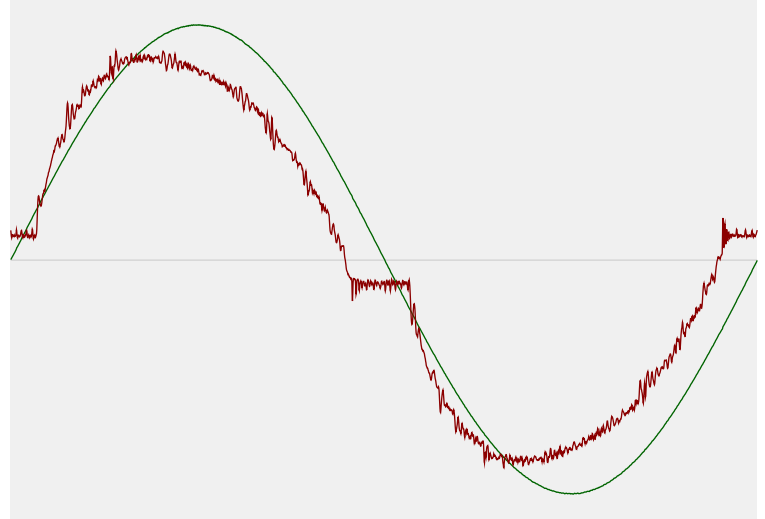


## Power Details

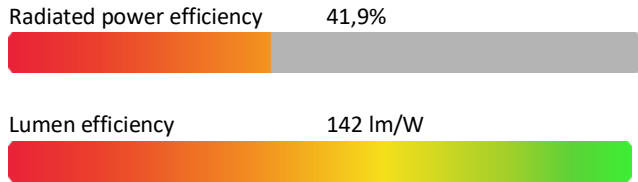
### Input Power

Power feed to light source	28,8 W
Frequency of input power	50 Hz
RMS Input voltage feed, $V_{RMS}$	230 V
RMS Input current feed, $I_{RMS}$	0,129 A
Volt-Ampere or apparent power = $V_{RMS} * I_{RMS}$	29,73 VA
Displacement factor of AC power feed	0,97
Power factor of AC current feed	0,97
Total harmonic distortion of the current	11,04%
Total harmonic distortion of the voltage	0,07%

### Input Power Curve



### Efficiency



## Stabilization Details

### Warmup Conditions

Stable period	15 min
Stable change max	2,0%
Minimum time	15 min

### Color Temperature Change

CCT start	3992 K
CCT shift	+8 K
CCT end	4000 K

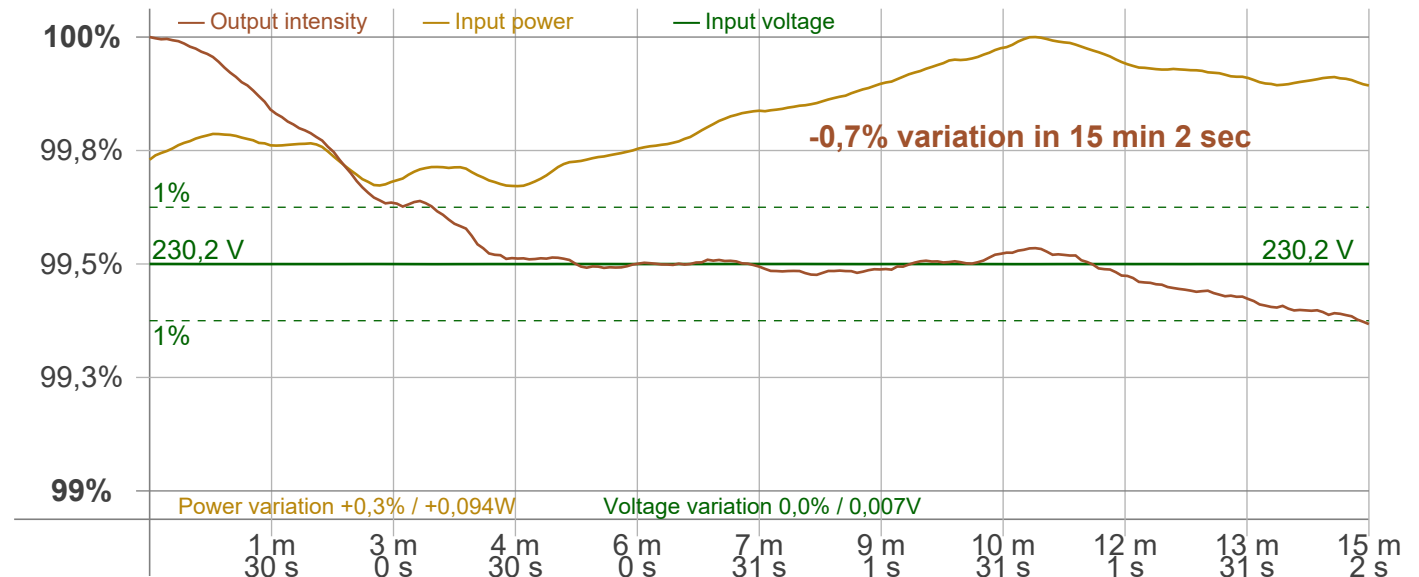
### Warmup Result

Total warmup time	Lamp stabilized in 15 min 2 sec
Warmup variation	-0,7%

### Output Change

Output start	4096 lm
Output change	-25 lm
Output end	4071 lm

## Stabilization Curve



# Light Measurement Report

Print date: 24-2-2025

Measurement date and time: 24-2-2025 10:58:01 – Measurement no. VFR-250224-0139-MS

Measurement tracking No. and Link: [VT250224-007629](https://www.viso-systems.com/VT250224-007629)

Operator:



## Flicker /TLA details

Flicker Meter Type: Viso Systems LabFlicker  
 Frequency of input power: 50 Hz  
 Flicker/TLA sample rate: 20000 samples/s

**Measurement time**  
 PstLM: 180 sec  
 All other indices: 1,2 sec

### Flicker indices according to Illuminating Engineering Society (IES)

Flicker frequency: 100 Hz  
 Percent Flicker: 52,22 %  
 Flicker index: 0,17

### Flicker indices according to California Energy Commission (CEC) 2016b

JA8/10 40 Hz: 0,19 %  
 JA8/10 90 Hz: 0,46 %  
 JA8/10 200 Hz: 52,16 %  
 JA8/10 400 Hz: 52,04 %  
 JA8/10 1000 Hz: 52,19 %

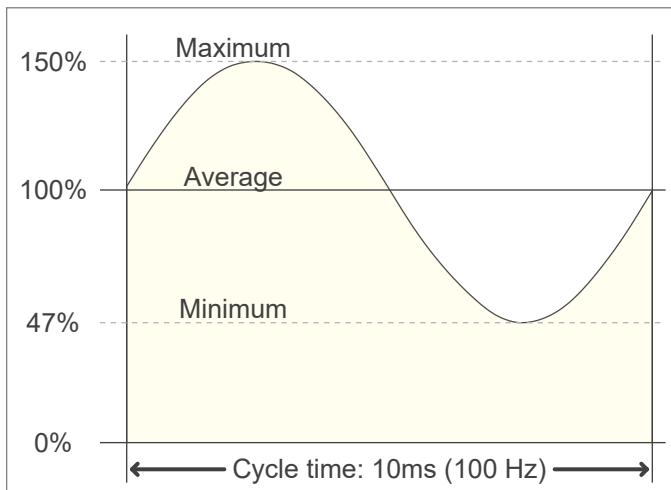
### TLA indices (re IEC TR 61547-1, IEC 61000-3-3 and IEC 61000-4-15)

PstLM value (F < 80 Hz): 0,1  
 SVM value (80 < F < 2000 Hz): 2,02

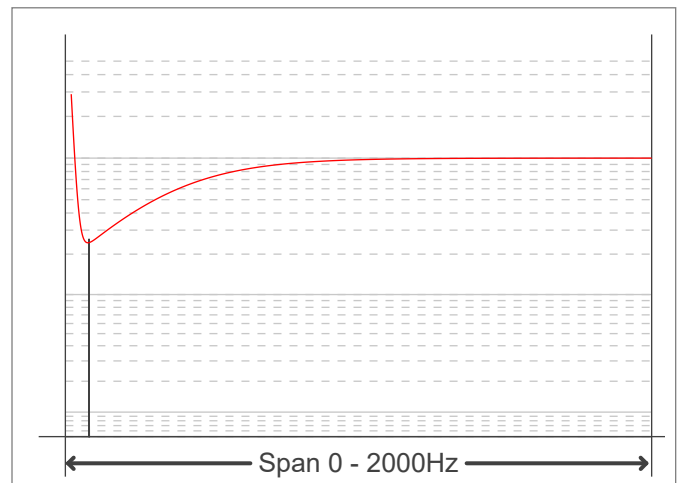
### Flicker indices according to Lighting Research Center (2015)

Perception metric, Assist Mp: 0,07

Flicker frame (frame of one flicker period in time domain)



Flicker FFT (flicker curve in frequency domain)



## IEEE 1789 Frequency/modulation plot

